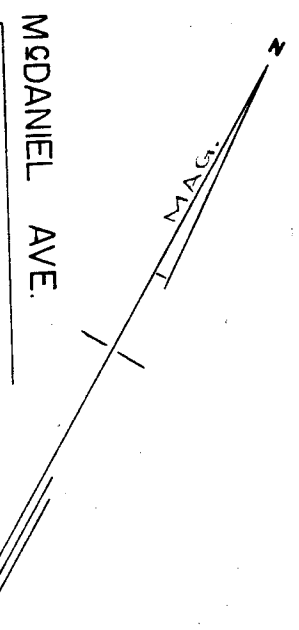
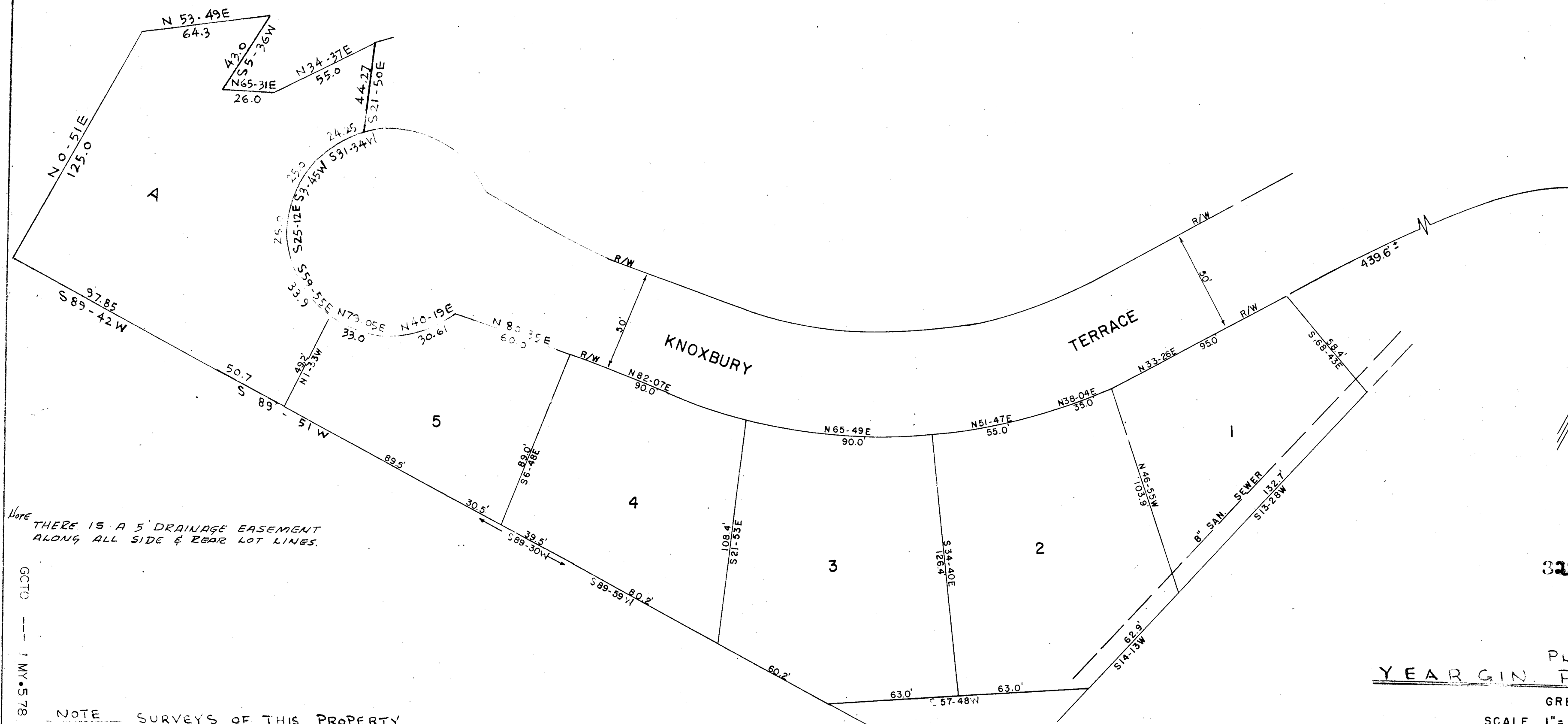


THIS PLAT IS NOT A SUBDIVISION
 AS DEFINED BY THE GREENVILLE
 COUNTY SUBDIVISION REGULATIONS.
 5/5/78 *Ray J. Carter*
 Chairman, Secretary, or Director of
 Planning,
 Greenville County Planning Commission

MICROFILMED



Note: THERE IS A 5' DRAINAGE EASEMENT
 ALONG ALL SIDE & REAR LOT LINES.

GCTC --- 1 MY 578 814 3.0001

NOTE: SURVEYS OF THIS PROPERTY
 WERE - SECT. A HALTER-NORWOOD TERRACE
 DATED 5-3-66 & REV. OF KNOXBURY TERRACE
 CUL-DE-SAC DATED 1-31-67. BOTH SURVEYS
 BY PIEDMONT ENGINEERS & ARCHITECTS

FILED
 GREENVILLE S.C.
 MAY 5 1978
 DONNIE STANBERRY
 CLERK

✓ 6-M-48

31987
 PLAT FOR
 YEARGIN PROPERTIES, INC.
 GREENVILLE, S. C.
 SCALE 1" = 40' 4-10-78

MAY 5 1978
Lawrence M. Thompson
 PIEDMONT ENGINEERS ARCHITECTS & PLANNERS
 GREENVILLE, SOUTH CAROLINA